

7 Woodlands, Rotherham, S60 3EQ



Offered for sale with No Onward Chain is this attractive 2 bedroom GROUND FLOOR apartment, which is tastefully appointed throughout and is situated within a stylish executive development just off Whiston Worrygoose Island with a choice of shops, popular pubs and restaurants all within easy walking distance and with links to Sheffield and the M1 Motorway close by.

£170,000 Leasehold

Hallway - 1.3m x 3.69m (4' 3" x 12' 1")

Kitchen - 2.75m x 3.47m (9' x 11' 5")

Lounge - 5.3m x 4.12m (17' 5" x 13' 6")

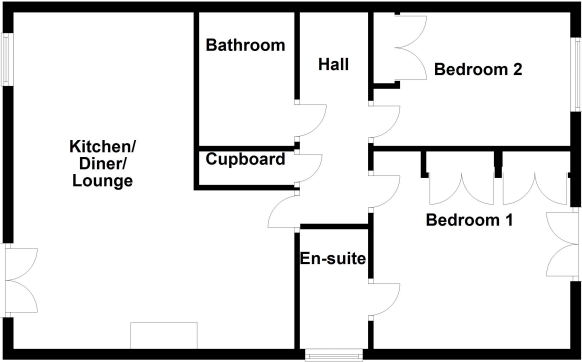
Bedroom 1 - 3.5m x 3.75m (11' 6" x 12' 4")

En-Suite

Bedroom 2 - 3.46m x 2.52m (11' 4" x 8' 3")

Bathroom - 1.8m x 2.5m (5' 11" x 8' 2")

Ground Floor



Any areas, measurements or distances referred to are given as a guide only and are not precise.
Floor plans are not drawn to scale and are provided as an indicative guide to help illustrate the
general layout of the property only.
Plan produced using PlanUp.

Score	Energy rating	Current	Potential
92+	A		
81-91	B		
69-80	C	80 C	80 C
55-68	D		
39-54	E		
21-38	F		
1-20	G		